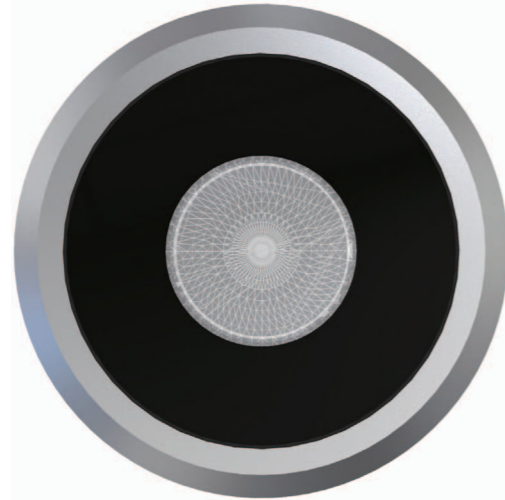




10.0910



**材质:** 304# 不锈钢灯体;  
304# 不锈钢预埋件;  
304# 不锈钢紧固螺丝;  
铜镀镍防水接头;  
5mm 钢化安全玻璃。

**安装:** 适应环境温度: -30°C~ +50°C;  
可调角度范围: 不可调

**线材:** 单色常亮: 1 条 0.5 米两芯线, 线径 7.0mm;  
DMX512 控制: 1 条 0.5 米六芯线, 线径 7.5mm

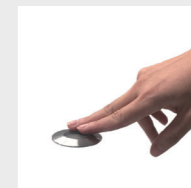
**包装:** 灯具净重: 0.35kg  
外箱尺寸: 400x260x275mm  
包装容量: 48 灯 / 箱  
包装毛重: 1kg

**Material:** 304 stainless steel housing & cover ring;  
5mm clear safety glass;  
anti-aging waterproof silicone gasket;  
304 stainless steel external fasten screws;  
304 stainless steel recessed box.

**Finishing:** Stainless steel.

**Installation:** Ambient temperature: -30°C~ +50°C ;  
Single Color: 1x 0.5m length 2-cores Ø7.0mm power supply cable;  
DMX512 compatible: 1x 0.5m length 6-cores Ø7.5mm cable;  
Nickel plated brass waterproof cable gland

**Packaging:** Net Weight: 0.35kg  
Outer carton: 400x260x275mm(48pcs/ctn)



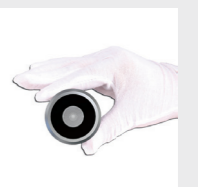
40°C @ Ta 25°C



Anti-condensation kit

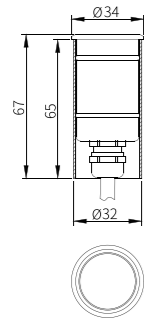


Optional Accessory  
IP68 Junction box



Compact size

# 10.0910



LED 2W 4000k Beam Angle	Beam Diagram	Beam Diagram	H(m)	medlux	maxlux
15°			2.0	239	315
25°			2.0	149	206.5
40°			2.0	47	69
60°			2.0	20.6	33

Model No.	LED Color	CRI	Light source Luminous Flux @4000K	System Power	Luminaire Luminous Flux @4000K	Luminaire Efficiency	Control Mode	Beam Angle
10.0910.A1V12	2200K-5700K	Ra>80	240lm	2W	212lm	106lm/W	ON/OFF	15°/25°/40°/60°
10.0910.D3V24	2200K-5700K	Ra>80	165lm	1W	90lm	90lm/W	ON/OFF	120°
10.0910.D3CV24	2200K-5700K	Ra>80	165lm	1W	90lm	90lm/W	DMX512	120°
10.0910.E3SV24	RGBW		33lm	0.6W	10.2lm	17lm/W	DMX512	120°

Installation:

